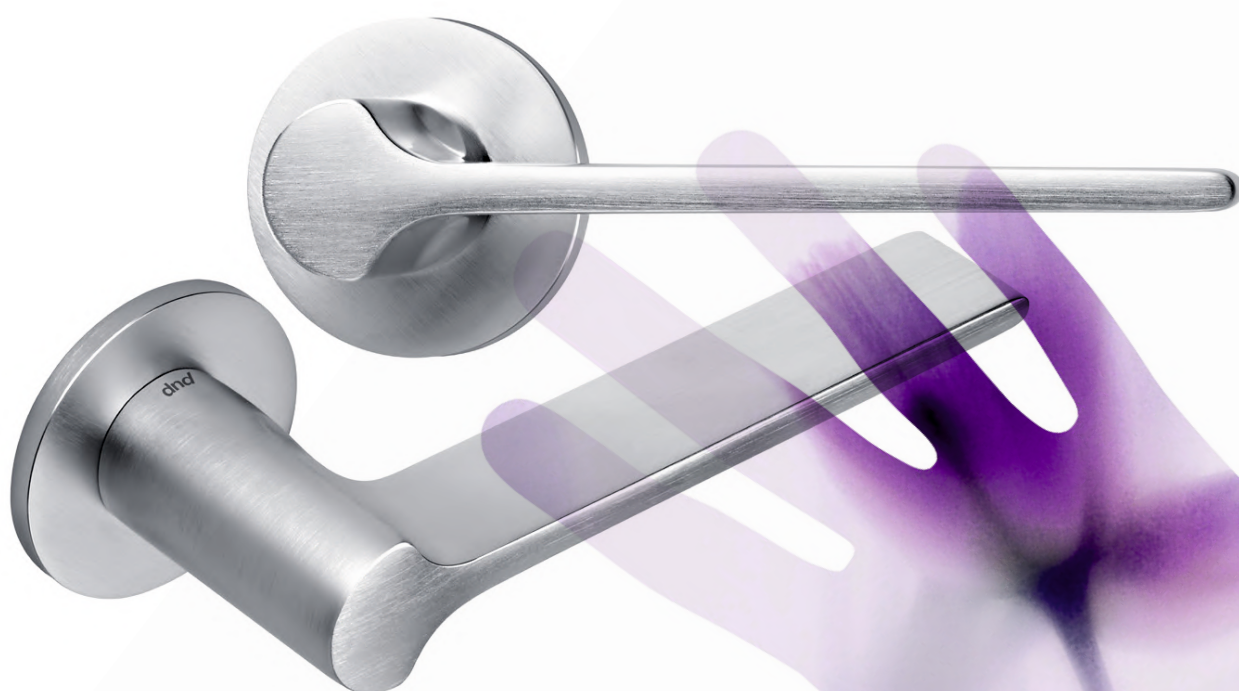


dnd



Company



A company with UNI EN ISO 9001 quality system certification

- Optimized design
- Constant training of human resources
- Controlled working environment
- Technologically advanced production
- Continuous monitoring

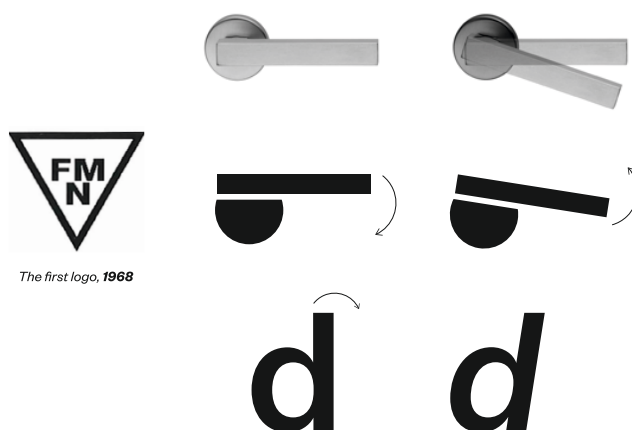


There are territories in Italy where the combination of history and the stories of people has become an admirable blend: one of those places is Val Sabbia, a pre-Alpine zone near Brescia bordered by Lake Garda to the east and Val Trompia to the west. A valley known for its historic vocation for the working of metals, the making of steel, the generation of strong objects – made by wielding a hammer, by casting, by die-casting – in old forges that have been transformed, over time, into solid industrial companies. This is the context for the story of Angelo Martinelli, who with his brothers, in 1968, in the town of Nozza, founded the company FMN Martinelli (Fratelli Martinelli Nozza), specializing in the production of handles and accessories for doors and windows. The Dnd trademark was created in 1998, with the aim of offering high quality products on the market, thanks to collaboration with outstanding designers.

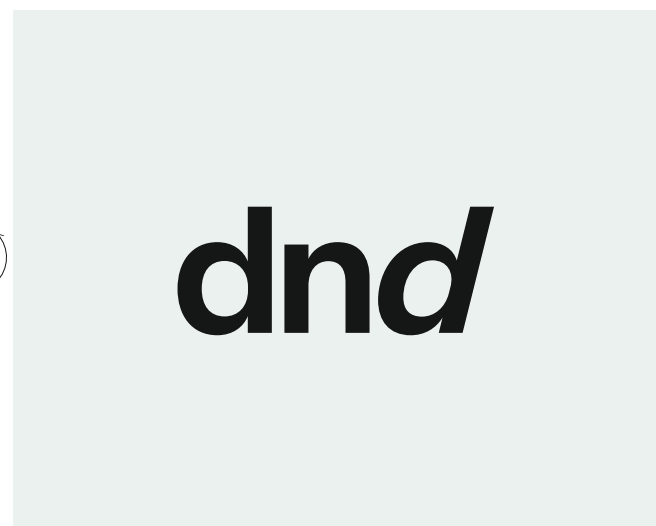
Today Dnd, helmed by Vilma Martinelli, is an important company with 50 years of history. Son and daughter Pietro and Simona – the third generation of the family – play an active role, creating a successful balance of craftsmanship, experience and innovation. A company that has evolved and concentrated on developing production capacity, updating processes and specializing in the shaping of new, different metals with which to make handles.

While at first it was the territory that drove the creativity of the company, today it is the company that plays a key role in Val Sabbia for the development of products, encouraging and supporting a network of crafts firms from which to order specific phases of production and finishing: a chain of manufacture that represents a remarkable value, an ideal extension and completion of a process that ensures the excellence of the products that Dnd, through its research, sets out to create. Today, also thanks to the expertise of the in-house staff, the company strives to be a forge of ideas for Italian and international contemporary design: a case of productive know-how at the service of the creativity of outstanding designers and architects, with whom Dnd establishes ongoing and solid relationships, looking to the future with confidence and curiosity.

Identity



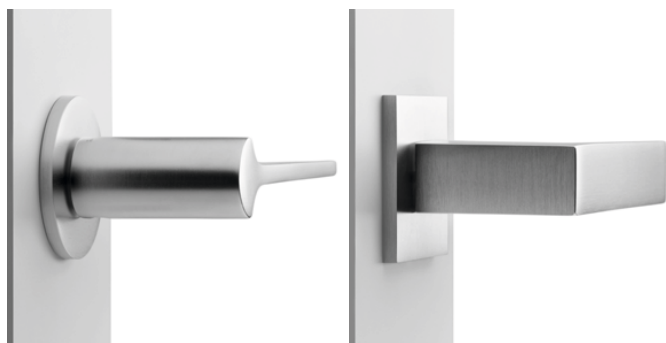
The first logo, 1968



The new coordinated image of Dnd reflects a desire to play an exemplary role in the world of the best contemporary design. A clear, strong, solid image that shines through in every space of representation of the company. The new logo designed by Leonardo Sonnoli features an updated company name and a letter 'd' at an angle, like a handle during use. A logo that indicates a direction – the future – while at the same time embodying a dynamic present.

The catalogue, approached as a graphic environment of forceful clarity, becomes the ideal setting in which the handles – with their underlying values of form and finish – can be seen to best advantage. A catalogue that sets out to convey a statement of intent, marking a before and after in the world of those who produce handles, and those who love them: a book about an object that is capable of transforming our perception of a space, to enter the near future and the history of tomorrow of Dnd.

Door System



The Less is fine system has a thickness of just 4 mm. It has been developed in tune with the latest design trends. A patented double spring-loaded metal backplate facilitates installation. Dnd patent.



The parts are made with PA6 nylon, with uni-directional left or right spring. The backplate has a diameter of 50 mm and a thickness of 7 mm. Holes for attachment to wood, 38 mm centering, with or without connector nuts.

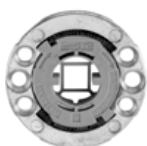
The inner spring and system are certified by AQM - Cert.2012-1000/Ppe in keeping with UNI EN 1906 standards.

Mechanical components wear and tear test. Opening and closing simulation to more than 200.000 cycles.

Category of use Grade 3: High frequency of use by the public or others with little incentive to exercise care and with a high chance of misuse.

Durability Grade 7: high frequency of use 200.000 cycles.

Type of operation B spring-loaded furniture.



Less is fine



VIS



VIS

Summary

Door

VIS 50x7 mm square rose-escutcheon	FINE 50x4 mm square rose-escutcheon	52 52x10 mm square rose-escutcheon
VIS 50x7 mm round rose-escutcheon	52 52x10 mm round rose-escutcheon	FINE 50x4 mm round rose-escutcheon
B 50x10 mm rounded rose-escutcheon	R special rose-escutcheon	R special square rose-escutcheon
V oval rose-escutcheon	S narrow oval rose-escutcheon	S narrow rectangular rose-escutcheon

Finish

Brass

OGH Bronzo satinato opaco Matt satin bronze	ONS Nickel satinato Satin nickel	OC Power cromo lucido Power polished chrome
PGS PVD grafite satinato Satin graphite PVD	PVD-BG PVD oro antico lucido Antique bright gold PVD	PVD-SG PVD oro antico satinato Antique satin gold PVD
PVD PVD Oro Gold PVD	ORO Placcato oro 24K Gold plated 24K	PGS PVD grafite satinato Satin graphite PVD
OBN Bianco White	ONO Nero Black	ONS Nickel satinato Satin nickel

Zamak

ZC Cromo lucido Polished chrome	ZNS Nickel satinato Satin nickel	ZGH Bronzo satinato opaco Matt satin bronze
ZOL Ottonato lucido Polished brass color	ZNE Nero Black	ZBN Bianco White

Aluminum

ASV Silver Silver	ARO Oro satinato Satin gold	ABR Bronzo Bronze
ABN Bianco White	ANE Nero Black	

Fire resistance

Attestation of fire resistance
EN 1634-2 ED. 2008
Fire resistance and smoke control tests for door, shutter and openable window assemblies and elements of building hardware.
The Dnd products can be used for installation on doors and openable windows of similar type that had been tested according to EN 1634-2, and have been shown to have at last the same fire resistance.



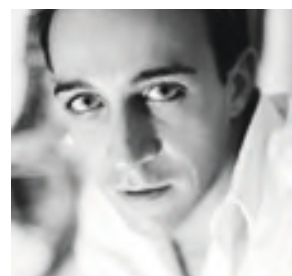
Designer



Achille Castiglioni,
Gianfranco Cavaglià



Odo Fioravanti



Sandro Santantonio



Mario Padiglione



Andrea Morgante



Nicola Novelletto



Studio Hot Lab



Giulio Iacchetti



Karim Rashid



Didier Schweizer



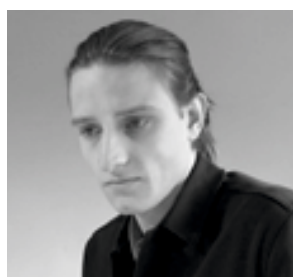
Mauro Ronchi



Jaime Hayon



Marco Pisati



Enrico Martini

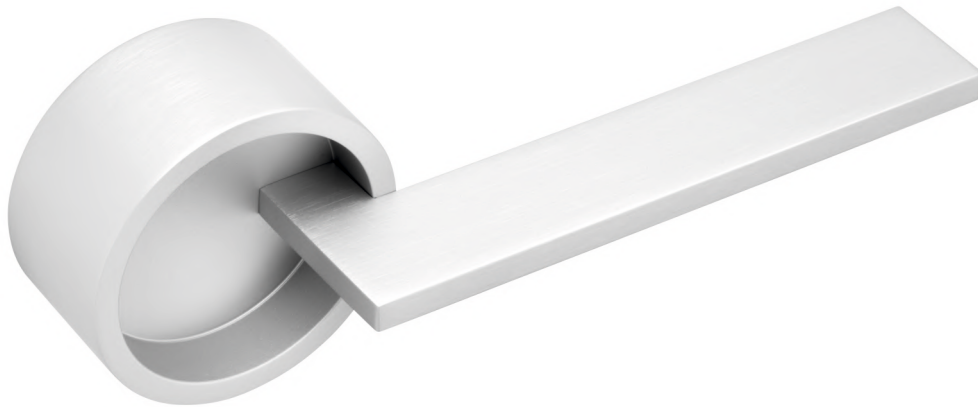


Inga Sempé

timeless

Aluminium

Design: Marco Pisati



ASV
Silver



ABN
White



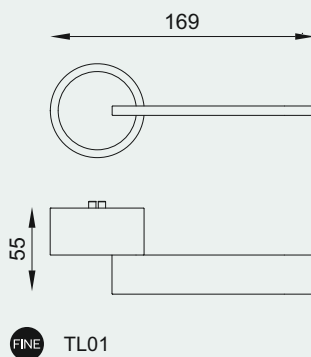
ANE
Black

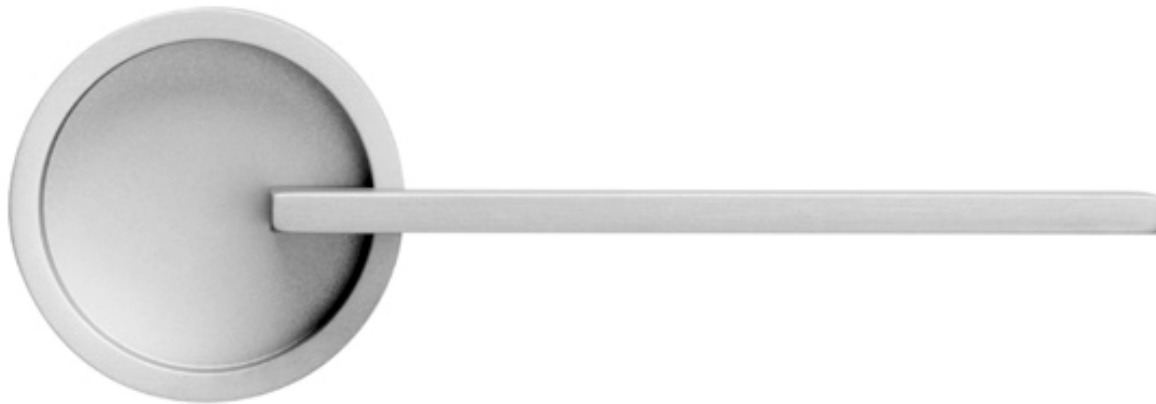


ARO
Satin gold *new*



ABR
Bronze *new*



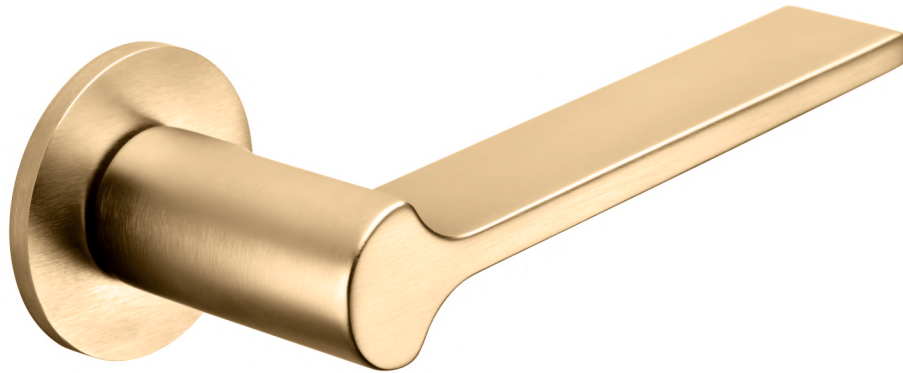


Two essential graphic signs, a line and a circle that intersect in a central and symmetrical way.

ginkgo

Design: Giulio Iacchetti

Hot Stamped Brass



OC
Power Polish Chrome



ONS
Power Satin Nickel



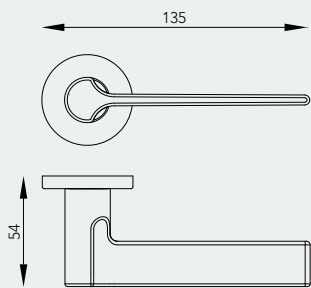
PGS
PVD Satin Graphite



PVD-BG
Antique Bright Gold



PVD-SG
Antique Satin Gold



FINE GK40



Good Design Awards
2017



*A form based on nature,
the special, unique shape
of a Ginkgo leaf, becomes
the structure and decoration
of a handle that is made in
two different versions.*

ginkgo biloba

Design: Giulio Iacchetti

Hot Stamped Brass



OC
Power Polish Chrome



ONS
Power Satin Nickel



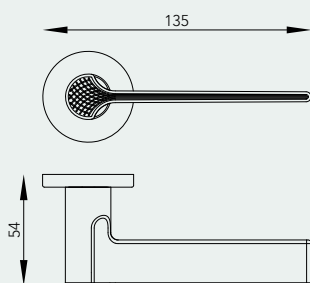
PGS
PVD Satin Graphite



PVD-BG
Antique Bright Gold



PVD-SG
Antique Satin Gold



FINE GB40



Good Design Awards
2017



Ginkgo Biloba, the version of the Ginkgo handle with the decorative surface engraving, is a further metaphorical reminder of the veins of the leaf.

chop

Zamak

Design: Didier Schweizer



ZC
Polished chrome



ZNS
Satin Nickel



ZNE
Black



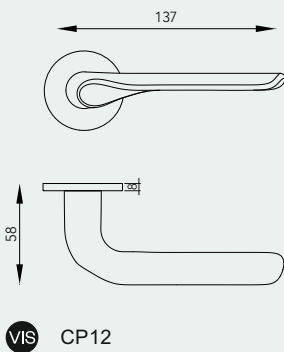
ZOL
Polished brass color *new*



ZGH
Matt satin bronze *new*



ZAN
Anthracite *new*



joy

Zamak

Design: Nicola Novelletto



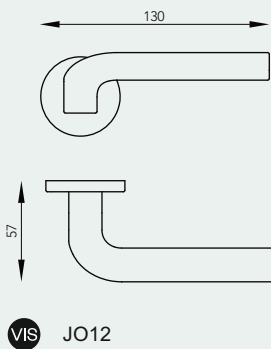
ZC
Polished chrome



ZNS
Satin Nickel



ZNE
Black



VIS JO12

joy 02

Zamak

Design: Nicola Novelletto



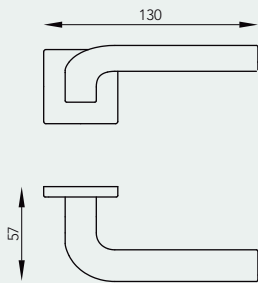
ZC
Polished chrome



ZNS
Satin Nickle



ZNE
Black



vis JO14

fold

Zamak

Design: Mario Padiglione



ZC
Polished chrome



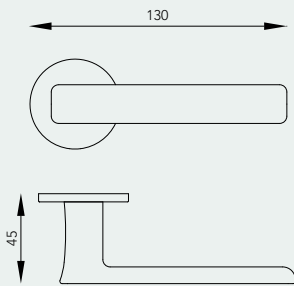
ZNS
Satin Nickel



ZNE
Black



ZAN
Anthracite *new*



VIS F012

fold 02

Zamak

Design: Mario Padiglione



ZC
Polished chrome



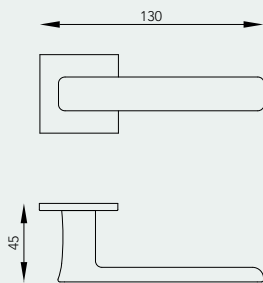
ZNS
Satin Nickel



ZNE
Black



ZAN
Anthracite *new*



VIS F014



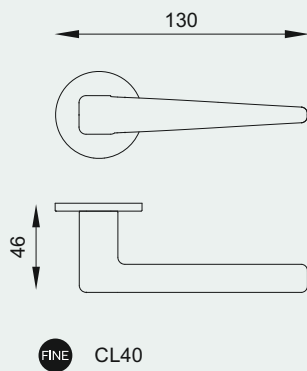
PGS
Satin graphite PVD



PVD-BG
Antique bright gold PVD



PVD-SG
Antique satin gold PVD



cloe 02 *new*

Hot stamped brass

Design: Dnd Technical Division



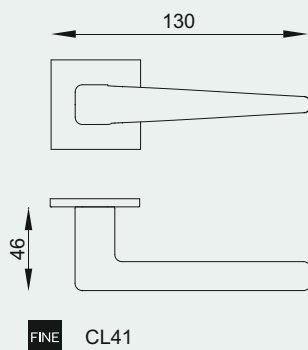
PVD-SG
Antique satin gold PVD



PGS
Satin graphite PVD



PVD-BG
Antique bright gold PVD



fedora *new*

Hot stamped brass

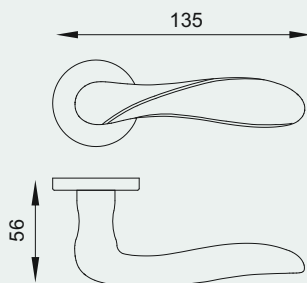
Dnd Technical Division



AB
Antique bronze



OGH
Matt satin bronze



VIS 530/12

